



# Walking Tour

the **basque museum**  
AND CULTURAL CENTER

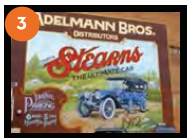
30 Minutes



**Kilgore Trout.** *Marcus & Skyler Pierce.* Alley off Sixth Street between Grove & Main streets. You may have seen it floating belly-side up. The mural is an indicator of the state of politics relating to fish conservation. When the steelhead is belly-side up, things are looking grim.



**Central Fire Station.** 1902. This was the second fire station in Boise, but the first to employ fully paid fire fighters. Before this, they were volunteers. This was once home to horse-drawn fire engines.



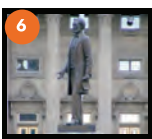
**Adelmann Building.** 1902. Designed by Cambell & Waylen. Idaho St. & Capital Blvd. This building was built for \$10,000. It was home to a Laundromat, Fong's Tea Garden, The Elk's Fraternity Headquarters, and an automobile repair shop owned by Richard Adelmann, called Stearns's Motor Car.



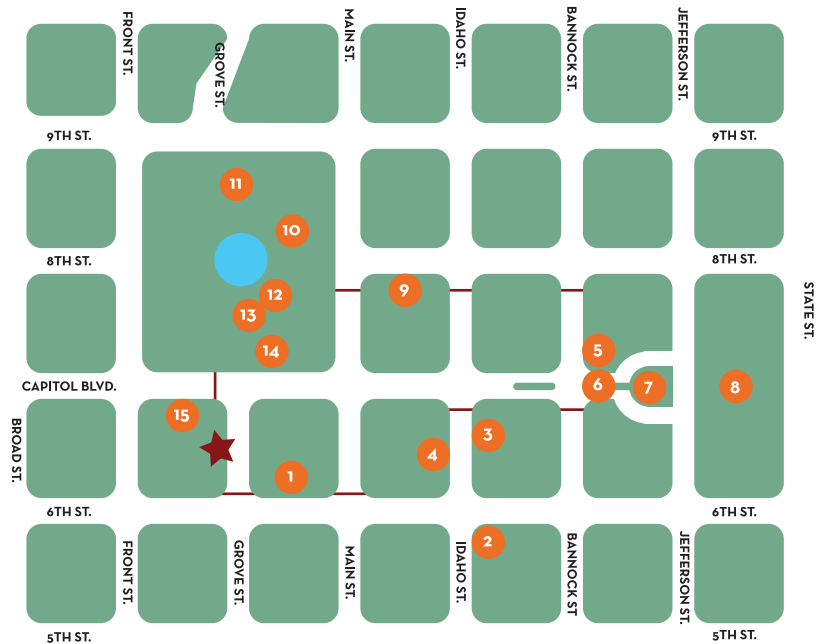
**Penny Postcard: A Home Town Greeting.** 2004. Mark Baltes. Northwest side of City Hall. Based on the countless penny postcards scribbled with notes from loved ones and depicting different aspects of Boise, this art piece is meant to evoke feeling of civic pride.



**Hospitality of the Nez Perce.** 2006. Doug Hyde. A replica of the Lewis-Clark State College statue in Lewiston, Idaho. It depicts Meriwether Lewis, William Clark, and Twisted Hair with his son Lawyer. Twisted Hair is motioning to the west towards the Pacific Ocean.



**Lincoln.** 1915. Alphonso Pelzer. A life-sized sculpture of Abraham Lincoln by a Civil War Veteran named B.H. Barton in 1915. The sculpture is one of 6 duplicates and is the oldest Lincoln statue in the Western United States.



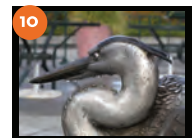
**Steunenberg.** 1927. Gilbert Riswold. This statue memorialized Govern Frank Steunenberg, Idaho's governor from 1897-1900. He was assassinated in 1905.



**Idaho State Capitol Building.** 1912 (completed). John E. Tourtellotte. The seat of Idaho's state government, currently housing the executive & legislative branches and numerous state offices.



**Sidney's Niche.** 1992 (recommissioned 2002 by Rick Thomson). 8th Street Escalator between Main and Idaho Streets. The whimsical, site-specific mural features a rat on a treadmill "operating" the escalator's machinery.



**Great Blues.** 1990. David Berry. Grove Plaza. This stainless steel sculpture representing blue herons is a stream brings nature to our urban center. Peek into the end of the hallow log.



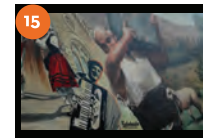
**Homage to the Pedestrian.** 2002. Patrick Zentz. Grove Plaza between the Fountain & 9th Street. Pedestrian motion triggers musical drum rhythms with this innovative, interactive sculpture.



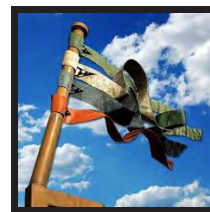
**Keepsies.** 1985. Ann LaRose. The Grove Plaza. Children are invited to interact with this sculpture of three children playing marbles.



**Historical Sight: Boise Chinatown.** 2001. Dwaine Carver. Grove Plaza & Capitol Boulevard near Front Street. Peer into stationary binoculars and see actual historic photos referencing the Chinese presence at these exact locations in Boise. Be sure to read the text on the poles.



**Basque Mural.** 2000. Bill Hueg. Capitol Boulevard in bank parking lot. This project took 27 volunteers and 3 full days to create this mural depicting the various aspects of the unique Basque culture in Idaho.



Boise, Idaho has long been a central location where Basque immigrants first congregated after coming to the United States from the Spanish Basque Region. As immigrants established their lives here, Basques became well known for their hard work and perseverance.

The Basque Museum & Cultural Center provides a look into the Basque heritage through exhibits, collections, and tours. As a cultural center, it's a gathering place for events and educational opportunities - in which people of all backgrounds can participate.

Located in downtown Boise, Idaho, the Basque Museum & Cultural Center provides an active central location for maintaining the Basque culture in the United States.

